

IE324 SIMULATION

DATASETS FOR INPUT MODELING AND RANDOM NUMBER GENERATION

DATASET #1

Obs. No.	Value	Obs. No.	Value	Obs. No.	Value	Obs. No.	Value	Obs. No.	Value
1	6	11	4	21	2	31	2	41	5
2	5	12	3	22	5	32	3	42	2
3	4	13	0	23	4	33	3	43	2
4	5	14	4	24	5	34	5	44	4
5	11	15	10	25	5	35	4	45	5
6	2	16	10	26	11	36	8	46	4
7	6	17	4	27	1	37	7	47	1
8	7	18	9	28	11	38	2	48	2
9	8	19	7	29	6	39	4	49	1
10	4	20	4	30	4	40	2	50	2

DATASET #2

Obs. No.	Value	Obs. No.	Value	Obs. No.	Value	Obs. No.	Value	Obs. No.	Value
1	8.616	11	7.386	21	18.204	31	10.144	41	0.886
2	12.474	12	3.212	22	29.524	32	19.620	42	2.017
3	7.845	13	9.702	23	8.795	33	5.022	43	17.912
4	6.208	14	16.589	24	12.640	34	0.050	44	6.927
5	14.872	15	6.174	25	15.359	35	4.219	45	3.727
6	3.429	16	13.147	26	13.490	36	3.192	46	14.886
7	3.652	17	18.537	27	5.731	37	28.195	47	7.816
8	5.895	18	5.895	28	1.254	38	11.711	48	3.328
9	10.247	19	17.044	29	0.060	39	5.908	49	21.482
10	6.059	20	10.087	30	67.254	40	81.117	50	2.415

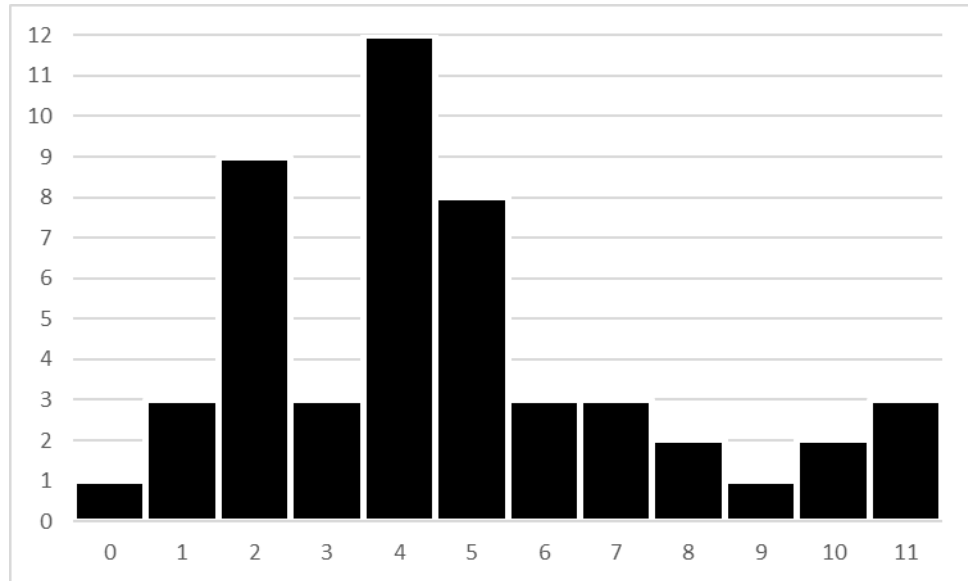
DATASET #3

Obs. No.	Value	Obs. No.	Value	Obs. No.	Value	Obs. No.	Value	Obs. No.	Value
1	0.806	11	0.540	21	0.925	31	0.226	41	0.632
2	0.272	12	0.054	22	0.979	32	0.889	42	0.315
3	0.969	13	0.052	23	0.100	33	0.451	43	0.305
4	0.476	14	0.591	24	0.170	34	0.874	44	0.718
5	0.494	15	0.194	25	0.899	35	0.551	45	0.952
6	0.541	16	0.034	26	0.249	36	0.114	46	0.703
7	0.742	17	0.669	27	0.333	37	0.654	47	0.255
8	0.801	18	0.490	28	0.177	38	0.530	48	0.701
9	0.643	19	0.924	29	0.214	39	0.343	49	0.695
10	0.613	20	0.328	30	0.372	40	0.761	50	0.415

HISTOGRAMS

DATASET #1

Num. of Arrivals (j)	Frequency (h_j)
0	1
1	3
2	9
3	3
4	12
5	8
6	3
7	3
8	2
9	1
10	2
11	3



DATASET #2

Interval (j)	Frequency (h_j)
[0,12)	32
[12,24)	14
[24,36)	2
[36,48)	0
[48,60)	0
[60,72)	1
[72,84)	1

