

WORLD RESOURCES INSTITUTE

DOĐA ERDAL

ÖZGÜR ŐEKER

SİNEM ŐENKARA



WORLD
RESOURCES
INSTITUTE

CONTENTS

- Background
- Services and Main Projects
- Supporters & Stakeholders
- How Does it Work?
- Work Process
- Success and Failures
- Current Situation
- Similar NGOs Worldwide
- References



BACKGROUND



- A nonprofit dedicated to sustainable development
- 1982 - MacArthur Foundation
- Researches to improve sustainability in business and economics worldwide.



- Sustainable practices for business, economics, finance and governance
- To support in six areas: food, forests, water, energy, cities, and climate.

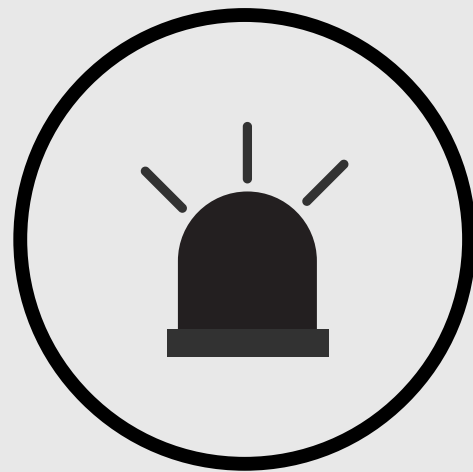


The mission of “to move human society to live in ways that protect Earth’s environment and its capacity to provide for the needs and aspirations of current and future generations”

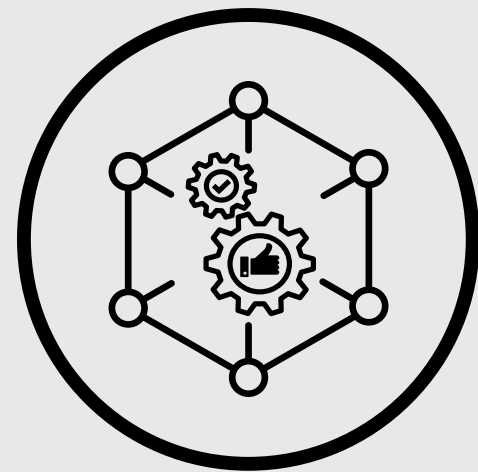


- Founded in Washington, D.C., United States.
- International offices in over 50 countries

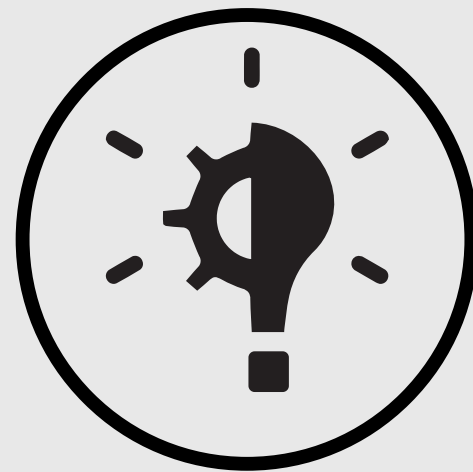
BACKGROUND | VALUES



Urgency



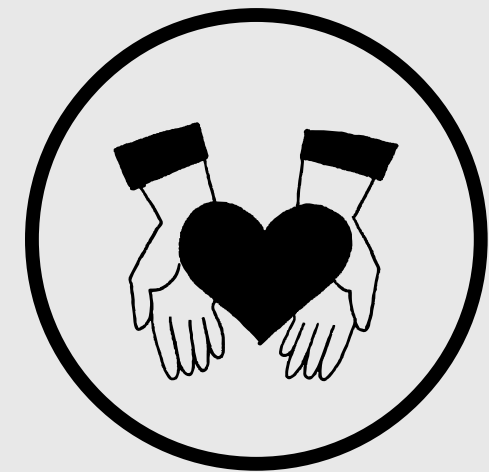
Integrity



Innovation



Independence



Respect





SERVICES & MAIN PROJECTS | FOOD

To feed an expected global population of nearly 10 billion by 2050 in a sustainable way, the Food team works on minimizing food waste, promoting diets rich in plants, and supporting countries in changing how they grow food.

- **Champions 12.3:** Motivating and encouraging global efforts to minimize food loss and waste.
- **Circular Food Systems for Rwanda:** Focused on making Rwanda's food system more sustainable and circular.



WORLD
RESOURCES
INSTITUTE



SERVICES & MAIN PROJECTS | FORESTS

WRI creates research based on data, as well as tools and international collaborations, to protect, sustain, and rejuvenate forests and various natural terrains.

- **Global Restoration Initiative:** WRI collaborates with governments, companies, and communities globally to restore millions of hectares of land that have been deforested or degraded.
- **The Land Accelerator:** A specialized program and network designed to support entrepreneurs in rejuvenating degraded lands and forests.



WORLD
RESOURCES
INSTITUTE



SERVICES & MAIN PROJECTS | WATER

WRI's Water team utilizes advanced global mapping, data, and analytical tools to pinpoint areas at greatest risk of water scarcity and to predict and prevent water-related conflicts.

Urban Water Resilience Initiative: Developing water systems in cities that are sustainable, adaptable, and resilient.

Aqueduct: Employing advanced data to pinpoint and assess global water risks.



WORLD
RESOURCES
INSTITUTE



SERVICES & MAIN PROJECTS | CITIES

This initiative aims to enhance the quality of life for the 3.5 billion people living in urban areas, transitioning towards a carbon-neutral city life. This includes creating more habitable communities and ensuring safe and fair access to streets and transport.

- **Urban Mobility:** Enhancing the well-being, health, and prospects of city dwellers by promoting sustainable and secure transportation and thoughtful urban planning.
- **Urban Development:** Shaping and guiding the development of urban areas to foster resilience, boost health, and fairly link individuals with opportunities.



WORLD
RESOURCES
INSTITUTE



SERVICES & MAIN PROJECTS | CLIMATE

WRI's Climate Program helps with expert advice, encourages governments to aim higher in their climate goals, participates in global climate talks, and keeps track of countries' progress by measuring and reporting it.

- **International Climate Action:** WRI strives to enhance global collaboration on climate change, aiming to fulfill the Paris Agreement's objectives and turn ambitious, fair climate efforts into action.



WORLD
RESOURCES
INSTITUTE



SERVICES & MAIN PROJECTS | ENERGY

WRI collaborates with big energy consumers, utility companies, lawmakers, development organizations, and city leaders globally to speed up the shift towards a sustainable and low-cost energy system.

- **City Renewables Accelerator:** Assisting U.S. cities in reaching their renewable energy targets.
- **Clean Energy Investment Accelerator:** Facilitating investment in clean energy for businesses and industries, aiding companies worldwide in achieving their clean energy objectives.



WORLD
RESOURCES
INSTITUTE

SUPPORTERS OF WRI

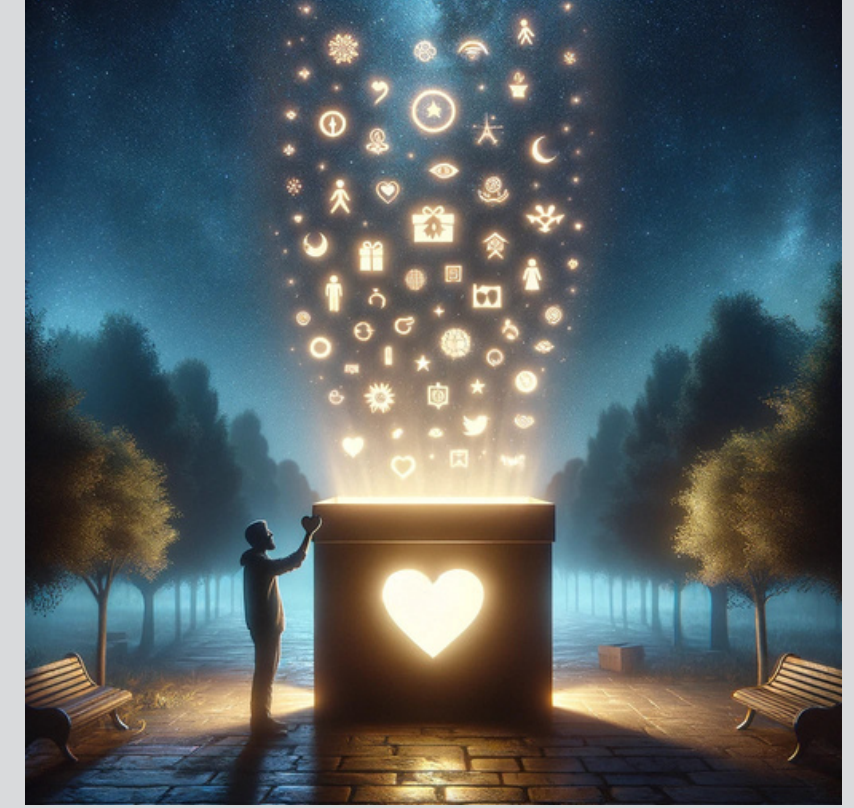


The World Resources Institute (WRI) receives support from a wide array of donors including:

- Governments
- Foundations
- Corporations
- Anonymous Donors



WORLD
RESOURCES
INSTITUTE



GOVERNMENTS

- French Development Agency (AFD)
- Ministry of Foreign Affairs of the Netherlands (DGIS)
- Royal Danish Ministry of Foreign Affairs (Danida)

FOUNDATIONS

- Bill and Melinda Gates Foundation
- Rockefeller Foundation
- Ford Foundation
- Laudes Foundation

CORPORATIONS

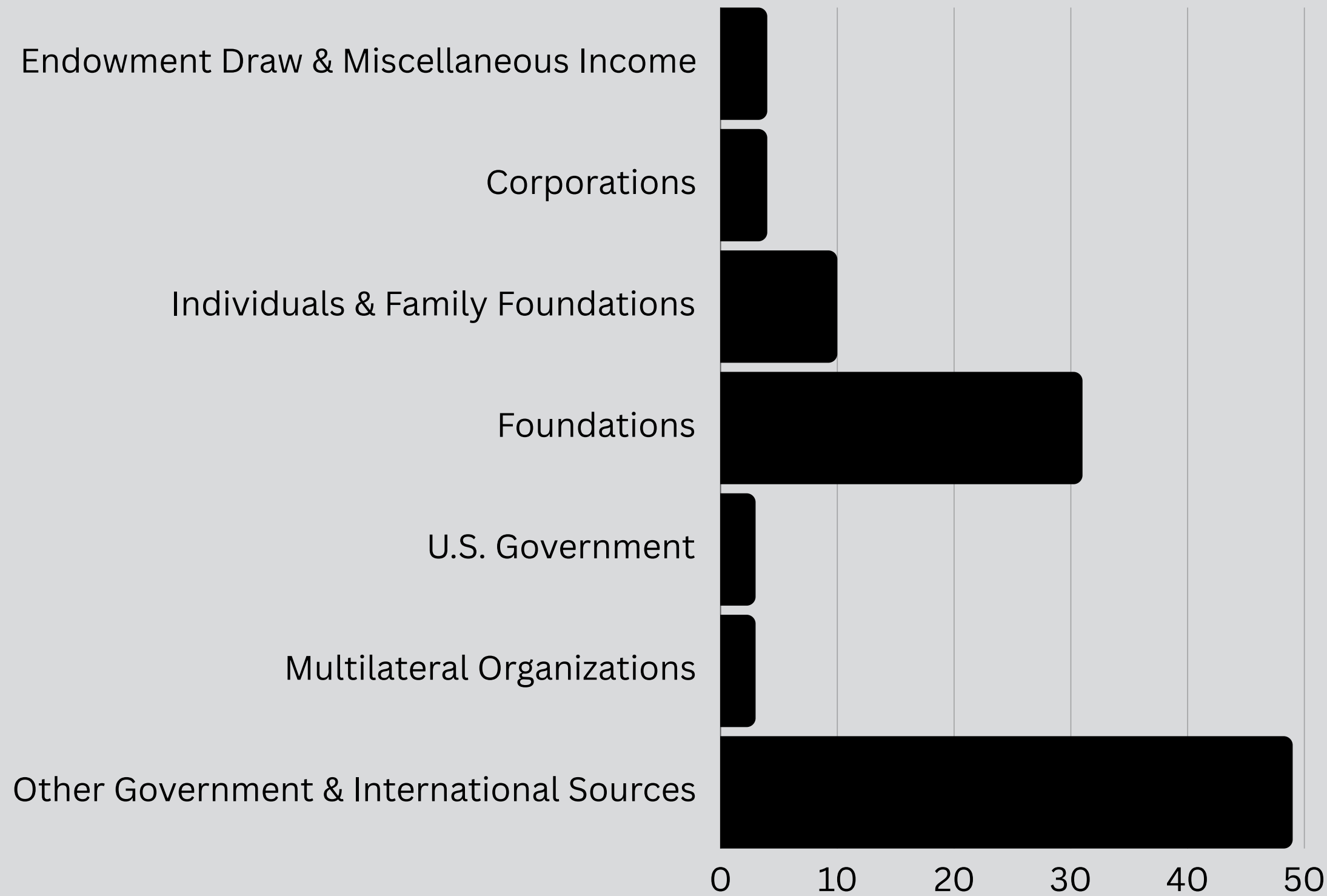
- Google Inc.
- HSBC Holdings
- IKEA Foundation
- Shell Foundation

ANONYMOUS DONORS



WORLD
RESOURCES
INSTITUTE

REVENUES-2022



As of September 30, 2022
the total revenue of the WRI
is 210,158,000 \$.



WORLD
RESOURCES
INSTITUTE

STAKEHOLDERS OF WRI



The World Resources Institute (WRI) benefits a wide range of stakeholders, including;

- Governments
- Private Sector
- Civil Society Organizations
- Communities and Individuals
- Academic and Research Institutions
- International and Multilateral Organizations



WORLD
RESOURCES
INSTITUTE

STAKEHOLDERS OF WRI

Governments

This involves aiding in the creation of plans for lowering greenhouse emissions, strengthening climate resilience, controlling water supplies, and protecting natural areas.

Private Sectors

WRI provides businesses with information and resources to help them invest in green technologies, adopt sustainable practices, and lessen their environmental impact.

Civil Society Organizations

Engaging with WRI allows NGOs, community groups, and non-profits to increase the impact of their environmental advocacy, obtain access to top-notch research, and take advantage of WRI's platforms.



WORLD
RESOURCES
INSTITUTE

STAKEHOLDERS OF WRI

Communities & Individuals

WRI affects communities by improving their ability to address environmental issues. The goals of WRI's work in these domains are to raise people's standard of living, health, and economic prospects globally.

Academic & Research Organizations

WRI works with academic institutions and research centers to serve as a link between the application of academic research to real-world policy issues.

International & Multilateral Organizations

WRI collaborates closely with organizations such as the United Nations, World Bank, and several regional development banks. Its contributions influence global policies pertaining to sustainable development, biodiversity, and climate change.



WORLD
RESOURCES
INSTITUTE

HOW DOES IT WORK?



- 1 Research:** Conducting data-driven research to understand and address global issues.
- 2 Policy Advocacy:** Influencing public policy based on research findings at local, national, and international levels.
- 3 Collaboration:** Partnering with governments, businesses, and civil society to implement sustainable solutions.
- 4 Innovation:** Using technology and innovation to enhance environmental decision-making and transparency.



HOW DOES IT WORK?



- 5 Capacity Building:** Empowering stakeholders with the knowledge and tools for sustainable practices.
- 6 Implementation Support:** Providing on-the-ground support for the practical application of sustainable strategies.
- 7 Communication:** Raising awareness and promoting action through effective outreach.
- 8 Global and Local Action:** Operating worldwide with tailored approaches to meet specific regional needs.
- 9 Metrics and Standards:** Developing sustainability standards and metrics for tracking progress.



WORK PROCESS

Identify: Pinpoint environmental, social, and economic challenges.

Research: Conduct data-driven research for evidence-based solutions.

Develop: Formulate innovative strategies and solutions.

Advocate: Influence public policy and promote sustainable practices.

Collaborate: Building partnership with stakeholders from different sectors

Implement: Support the practical application of sustainable solutions.

Evaluate: Monitor and assess the impact of initiatives.

Communicate: Share insights and results to foster awareness and action.



WORLD
RESOURCES
INSTITUTE

★ SUCCESSES ★

Influential Research and Publications:

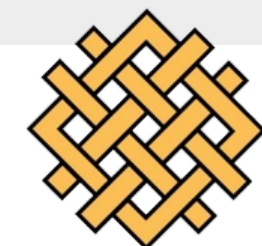
- Influential research and publications that shape global environmental policy and practice.
- Its annual reports, such as the World Resources Report, and tools like Global Forest Watch, have become indispensable resources for policymakers, researchers, and activists.

Data-Driven Solutions:

- Data-driven approach to addressing environmental challenges.
- It provides valuable research, data, and tools that help governments, businesses.
- Encourages civil society organizations to make informed decisions and implement sustainable practices.

Climate Action and Leadership:

- Played a crucial role in propelling global climate efforts, significantly contributing to the Paris Agreement's formation and adoption in 2015
- Shaping the discussions and pledges made during the negotiations through its researches and policies



★ SUCCESSES ★

Sustainable Cities Initiative:

- Helped cities around the world develop solutions to improve public transportation, reduce air pollution, and increase energy efficiency, significantly enhancing urban sustainability through its Ross Center for Sustainable Cities

Corporate Engagement:

- Successfully engaged the private sector in sustainability initiatives
- Got businesses to join eco-friendly projects, leading to less pollution and better care for the environment

Global Reach and Impact:

- Broad impact and an influencing policy with offices and initiatives in over 50 countries
- Ran programs worldwide, showing its knack for working from local communities to the global stage, proving its impact.



FAILURES | AREAS OF IMPROVEMENT

Balancing Global and Local Needs:

Although WRI operates on a global scale, it faces difficulties in making its projects relevant and beneficial at the local level. Adapting strategies to suit the unique environmental and social conditions of various regions remains a significant hurdle.

Funding and Independence:

Quantifying the real-world impact of policy advice and research can be difficult. WRI continues to refine its methods for evaluating the effectiveness of its work in tangible terms, such as reduced emissions or hectares of forest conserved.

Engagement with Developing Countries:

WRI finds it challenging to directly link its policy advice and research to specific impacts, like emission reductions or forest conservation. It's refining its approach to better evaluate these outcomes and demonstrate the effectiveness of its strategies.



FAILURES | AREAS OF IMPROVEMENT

Data and Methodology Challenges:

WRI relies heavily on data and scientific research to inform its work. However, environmental data can be complex, incomplete, or uncertain. Critics might point out instances where the institute's conclusions or recommendations are based on data that later proves to be flawed or overly optimistic.

Impact Measurement:

WRI depends on data and research, but sometimes faces issues with complex or uncertain data. Critics may highlight when the institute's advice relies on data that are later found to be incorrect or too hopeful.

Adaptation to Emerging Issues:

Environmental trends evolve rapidly, sometimes outpacing WRI's adaptations. Critics may note that the organization could be quicker in adjusting its focus and methods to new evidence or shifts in global circumstances.



CURRENT SITUATION

- World Resources Institute currently has a 5-year strategy (2023-2027) where they address systemic problems and pursue goals that benefit people, nature, and climate together.
- They are implementing their strategies with nearly 150 active projects and they conduct research on everyday topics.

MOST RECENT RESEARCHES:

- Did the Global COVID-19 Recovery Address Climate Adaptation and Resilience? An Analysis of Sixty-Seven Countries
- Land Emissions and Removals Navigator (LEARN) Tool: Data Sources and Calculation Methods
- Cost-Benefit Analysis Tool for Deploying Solar Irrigation Pumps: The Case for Rajasthan



CURRENT SITUATION

MAIN ONGOING PROJECTS:

GLOBAL FOREST WATCH

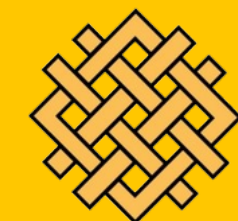
Global Forest Watch offers real-time forest data online for global transparency.

URBANSHIFT

UrbanShift aids over 20 cities across Asia, Africa, and Latin America in adopting holistic urban development strategies. This initiative aims to create cities that are efficient, resilient, and inclusive.

PARTNERING FOR GREEN GROWTH AND THE GLOBAL GOALS 2030

P4G supports net-zero transitions in developing countries by making climate businesses investment-ready, focusing on climate agriculture, food waste, water, zero-emission transport, and renewable energy.



WORLD
RESOURCES
INSTITUTE

SIMILAR NGO'S WORLDWIDE



CI collaborates with scientists, local communities, and field practitioners to conserve nature, global biodiversity, and human communities. It aims to safeguard natural resources, encourage eco-friendly business practices, and ensure effective governance.



Food and Water Watch works to make food, fish and water safe, accessible and sustainable. They've raised consumer awareness of the environmental and economic costs of bottled water.



WORLD
RESOURCES
INSTITUTE

SIMILAR NGO'S WORLDWIDE



Greenpeace is a leading direct action environmental organization with a global membership of 2.8 million. It focuses on critical issues like climate change, ocean conservation, forest protection, combating toxic pollution, opposing nuclear energy, and promoting sustainable agriculture.



The Nature Conservancy (TNC) is dedicated to preserving lands and species globally. It has safeguarded over 119 million acres of land and numerous river miles worldwide. Additionally, TNC leads over 100 marine conservation initiatives globally, highlighting its extensive efforts in habitat and biodiversity protection.



WORLD
RESOURCES
INSTITUTE

REFERENCES

World Resources Institute. "Global COVID-19 Recovery: An Analysis to Aid Climate Resilience." *World Resources Institute*, www.wri.org/research/global-covid-19-recovery-address-climate-resilience-analysis.

World Resources Institute. "Cost-Benefit Analysis of Solar Irrigation Pumps in Rajasthan." *World Resources Institute*, www.wri.org/research/cost-benefit-analysis-solar-irrigation-pumps-rajasthan.

World Resources Institute. "Learn the Tool: Land Emissions and Removals Navigator Technical Note." *World Resources Institute*, www.wri.org/research/learn-tool-land-emissions-and-removals-navigator-technical-note.

World Resources Institute. "WRI Annual Report 2022." *World Resources Institute*, April 2023, files.wri.org/d8/s3fs-public/2023-04/wri-annual-report-2022.pdf.

World Resources Institute. "WRI 2019-2020 Annual Report." *World Resources Institute*, wriorg.s3.amazonaws.com/s3fs-public/uploads/wri-2019-20-annual-report_0.pdf.

"Sustainability Degrees." *The Most Influential Sustainability NGOs*, www.sustainabilitydegrees.com/blog/most-influential-sustainability-ngos/.

World Resources Institute. "Top Outcomes." *World Resources Institute*, www.wri.org/top-outcomes.



WORLD
RESOURCES
INSTITUTE



THANK YOU!



WORLD
RESOURCES
INSTITUTE